

How to Prevent and Eliminate Rats in Residential Settings with Integrated Pest Management (IPM) 2018

Goals:

1. Eliminate rats from residential properties by removing what they like
 - a. FOOD SOURCES
 - b. SHELTER (burrows in and around foundations, walls, wood piles, and debris)
 - c. WATER SOURCES
2. Contact a Connecticut Licensed Pest Control Operator to exclude, trap, bait, and monitor (see CT Pest Control Operators on Page 3) once food and water sources are removed.
3. Utilize least toxic and most species-specific methods to eliminate rats.

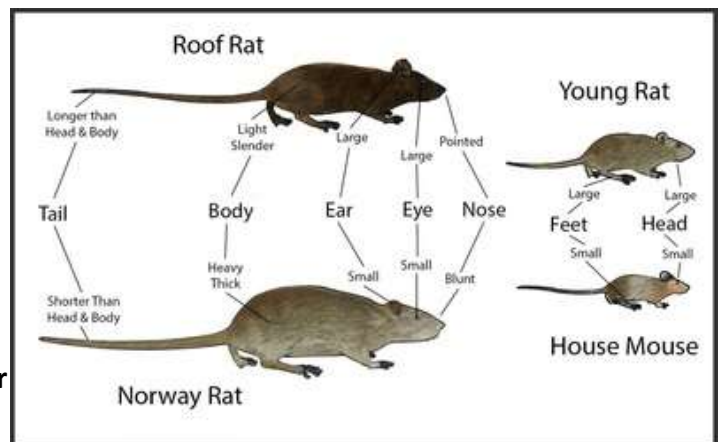
Integrated Pest Management (IPM) is a holistic approach to pest control utilizing multiple techniques to reduce and manage pest populations

- Setting Thresholds
- Identification and Monitoring
- Prevention
- Control

What do we know about Norway Rats (CT DEEP)?

(www.ct.gov/deep/cwp/view.asp?A=2710&Q=418752)

1. Live 50-150' from their nests
2. Burrow around foundations and structures
3. Can enter openings as small as ½"
4. Need a nearby and daily water source
5. Food high in protein and/or carbohydrates
6. Can carry various diseases
7. Can breed 12x per/yr. & 8-12 young per litter
8. ¾-1 lbs & tails shorter than body and head
9. Rats are not curious like mice and thus will only approach bait and traps when their food and water sources are reduced or eliminated.



<http://rozkalnikina.weebly.com/blogs/no-visa-pa-druskai-par-policiju-auklitem-pelem-un-mopediem>

Easiest Prevention

EXTERIOR

- Eliminate bird feeders and standing water (bird baths and containers that can hold water)
- Ensure recyclables are rinsed and put out the morning of trash day
- Ensure trash is bagged and put out the morning of trash day in covered trash cans
- Do not feed or leave food for animals outside
- Eliminate leaf litter and debris around foundations
- Eliminate animal waste



INTERIOR

- Keep all pet food in sealed containers and inside the house
- Check for and repair leaky plumbing
- Do not leave exposed food out in the open

Moderate Prevention

EXTERIOR

- Do not store firewood near the house, stack firewood on pallets
- Seal all holes where wiring or pipes enter the house or foundation
- Ensure gutters are cleaned and not leaking
- Seal holes and gnaw marks in foundations and basements
- Ensure garage and screen doors are sealed
- Replace weather stripping and patch any holes



INTERIOR

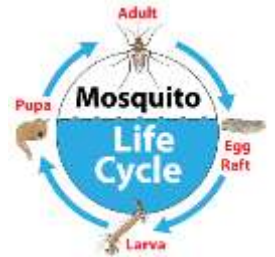
- Reduce clutter

More Difficult Prevention

- Eliminating dead wood or decaying trees around the property.
- Repairing attic screens and flashing.
- Eliminating shrubs and vegetation around the foundation of the house.
- **If rats persist when the previous have been done, contact a CT licensed pest control operator who specializes in rat extermination using Integrated Pest Management Techniques (page 3).**

How these preventions can help with other pests:

- Eliminating standing water reduces mosquito breeding (larvicide available).
- Removing leaves and debris eliminates harborage for mice (which carry ticks).



What to do if you find a dead rat:

- Use disposable gloves on your hands and a shovel to scoop up the rat (avoid direct contact).
- Place the rat in a plastic bag, then place the bagged rat in a second plastic bag and seal the bags.
- Place the rat in your household trash (yellow Stonington bags) and put it out just before 7am on trash day, preferably in a covered trash container.
- Remove and dispose of gloves in trash and wash your hand with soap and water for 20 seconds.

What's Next?

- **Once prevention methods have been conducted, and if rats persist, property owners should contact a CT licensed pest control operator (see below).**
- Pest control operators target burrows, nests, rat travel paths, food and harborage sources.
- They place and monitor traps and use CT DEEP approved baits/pesticides in secure bait boxes (to exclude non-target animals).
- Speak to your pest control operator about the baits they use, how they work and any environmental risks to non-target species.
- Search for registered pest control businesses, applicators and pesticides online at <http://www.kellysolutions.com/CT> or the CT DEEP Pesticide Management Program.
- **PROPERTY OWNERS WHO PURCHASE AND PLACE THEIR OWN BAIT/PESTICIDES MUST FOLLOW THE LABEL FOR THE AMOUNT, PLACEMENT AND USE. PESTICIDES ARE POISONS AND IMPROPER USE OR PLACEMENT CAN BE HAZARDOUS TO NON-TARGET ANIMALS. LEAVING RAT TRAPS OUTSIDE CAN ALSO HARM NON-TARGET ANIMALS SUCH AS DOGS AND CATS. A PROFESSIONAL IS YOUR BEST BET!!**

Local CT Licensed Pest Control Operators:

Bio Tech Pest Controls-401-315-2400 <http://www.biotechpestcontrols.com/>

Griggs and Browne-800-962-3296 <http://www.griggsbrowne.com/>

Waltham Pest Services-888-970-5170 <https://www.walthamservices.com/locations/new-london-ct/>

For more information, contact a **CT licensed pest control operator (see above)**,
Ledge Light Health District at 860-448-4882 or visit our website at www.llhd.org.

Revised 4/21/18