

City of Groton

Groton Utilities – Electric Division

TITLE:

The City of Groton, Groton Utilities, Electric Division, (acting by and through its Board of Utilities Commissioners (referred to “City” or “G.U.”) invites bids for:

Tree Trimming Services

to cover Groton Utilities and Bozrah Light and Power service territories, and will receive Proposals at the Office of the General Manager, Electric Division, 1240 Poquonnock Road, Groton, Connecticut, 06340, until **3:00 P.M. on Friday, March 11, 2022**, in a sealed envelope bearing the name and address of the person or entity submitting a Proposal and the following language on the front of the envelope:

PROPOSAL FOR TREE TRIMMING SERVICES FOR GROTON UTILITIES

The required RFP may be obtained by calling Maureen at (860) 446-4093 between 8:00 A.M. and 4:00 P.M. Monday through Friday. Proposals received in accordance with these instructions will be publically opened and reviewed at 10:00 A.M. on Monday, March 14, 2022, at the Groton Utilities Operations Complex, 1240 Poquonnock Road, Groton, CT, 06340.

ISSUED BY:

The General Manager Operations, Electric, Water and Wastewater (“G.M.”)

Groton Utilities
295 Meridian Street
Groton, CT 06340
860-629-5656

The City reserves the right to reject any and all Proposals received, or any part thereof, and to waive defects in same and to accept any Proposal deemed to be in the best interest of the City after a review of all factors, terms and conditions, including, but not limited to, price.

The City reserves the right to delete or reduce the scope of work described in this RFP in order to bring the cost within available funds. Any modifications to this RFP before the submission deadline, including, without limitation, additions, deletions clarifications or corrections will be issued electronically to all prospective respondents by way of written addendum.

Contract Period

Three-year contract with an option of additional years, up to a maximum of two years:

Year #1 – Start Date of July 1, 2022	End Date of June 30, 2023
Year #2 – Start Date of July 1, 2023	End Date of June 30, 2024
Year #3 – Start Date of July 1, 2024	End Date of June 30, 2025
Option- Year #4 – Start Date of July 1, 2025	End Date of June 30, 2026
Option- Year #5 – Start Date of July 1, 2026	End Date of June 30, 2027

Tax Exempt

The City of Groton, Groton Utilities (GU), is a tax-exempt municipal utility. A State of Connecticut Cert-134, Exempt Purchases by Qualifying Governmental Agencies, will be provided to the winning bidder at the time of bid award.

REQUEST FOR PROPOSAL FOR TREE TRIMMING

The City of Groton, Groton Utilities (GU), acting through its Electric Division (GU), solicits bids for Tree Trimming and related work, in accordance with this document.

GU specifically reserves to itself the right to reject or accept any and all bids, or to accept a portion of any bid, or to allow reasonable variations between the specifications set forth in the bid proposal, should, in its sole opinion, such action is deemed in the best interest of GU. Specifications are not intended to limit competition, but merely to indicate to the bidders the general type of material and/or service to be supplied. The bid may be awarded on any bid item or combination of bid items.

To qualify for acceptance, each bid must be accompanied by the bidder's published list price for the full line of material or services offered in the bid. Bids must also be accompanied by detailed descriptive information sufficient to enable GU to comparatively evaluate the operating characteristics and efficiencies of the material or services offered. Any deviations from the specifications herein must be clearly indicated on the Bid Proposal Form. Unless sooner rejected, or accepted, all bids must remain valid for a period of at least eight (8) weeks from the date of bid opening.

Performance bond is not required for this bid. **The successful bidder must hold all prices firm for the contract period.**

The bidder must indicate their name, address, and phone number on the bid form provided, and the bid form must be signed in the space indicated. The bidder must fill in all blanks (if any) on the specification form where requested.

A copy of this invitation, the signed bid form, and other specifications or information necessary to fully describe the services being offered must accompany each bid proposal. These shall be securely fastened on the left hand margin and enclosed **UNFOLDED** in a sealed envelope plainly marked:

**"BID ON TREE TRIMMING
2022-GU-BLP-VEG-01**

All questions regarding this specification shall be addressed to Mark Biron, General Manager – Operations, at 860-629-5656 or emailed to bironm@grotonutilities.com.

**SPECIFICATION
HOURLY RATES FOR TREE TRIMMING AND MANPOWER**

1. GENERAL

The City of Groton, Groton Utilities (GU) invites proposals for the following Tree Trimming Services.

A. Scope of Work

1. Work to be performed includes but is not limited to “electric line clearance on energized lines, as well as removal of trees and related tree pruning activities along the public ways and the public properties of the City and Town of Groton and Towns of Bozrah, Lebanon, Montville and Salem located in the State of Connecticut.
2. The tree trimming Contractor will perform work in Groton Utilities and Bozrah Light and Power Company utility franchise areas only.
3. The Contractor will provided tree-trimming services for a minimum of 48 weeks out of 52 weeks per year during the contract period. The Contractor will not be paid for any work not performed.
4. The successful bidder will supply four (4) full time (40 hours per week) tree-trimming crews. Two (2) tree trimming crews will be assigned to work in the Groton Utilities service territory while two (2) tree trimming crews will be assigned to work in the Bozrah Light and Power Company service territory. At times, all four (4) tree trimming crews will be assigned to one location either in Groton or Bozrah Light and Power service territories. There will be one supervisor assigned to the four crews.
5. All work will be performed in compliance with current A.N.S.I. Standard Z-133 and Nation Arborist Association (NAA) Pruning Standards.
6. The Contractor will provide one ground-man per tree crew in order to provide traffic duty for each tree trimming crew.
7. When needed, Police and Traffic duty personnel will be the responsibility of Groton Utilities / Bozrah Light and Power. Groton Utilities / Bozrah Light and Power will pay for costs associated with traffic duty.
8. Work to be performed will be presented to the Contractor on a daily basis. It will include, but is not limited to, the following items:

Electric Line Clearance
Tree Removals
Safety Pruning
Storm Damage
Miscellaneous Work

B. Equipment, Tools and Labor Specifications

Equipment, tools and labor to be supplied by the Contractor includes:

1. The Contractor will provide one (1) full time Supervisor with a pickup truck.
Supervisor duties and responsibilities include, but are not limited to, the safety of tree crew personnel, tree crew vehicles, and equipment maintenance. In addition, duties and responsibilities include planning and optimizing the weekly tree plan, and ensuring permission is obtained from Groton Utilities and Bozrah Light and Power customers prior to the start of tree work. The Supervisor is the contact person for Groton Utilities personnel, and directs tree crews in Groton and Bozrah Light and Power service territories as needed.
2. Tree trimming crews will consist of a lead, an experienced line clearance tree trimmer/tree climber, and a ground-man for traffic duty. All equipment associated with tree work must be furnished by the Contractor including an aerial lift (55ft minimum).
3. The Contractor will provide a truck-mounted fully insulated, 55-foot minimum vertical reach aerial lift, equipped with all necessary outriggers and safety devices.
4. Disc type brush chipper (18" minimum) - A minimum of two brush chippers will be provided one for the two (2) Groton Tree Crews and one for the two (2) Bozrah Light and Power Tree Crews.
5. An experienced line clearance tree trimmer/tree climber for above mentioned apparatus and a qualified ground-man in accordance with Section (C) of this specification.
6. Aerial lift is to be equipped at all times with:
 - Minimum of four (4) traffic direction signs w/flags
 - Six (6) traffic cones
 - Chocks, flares, first aid kit and related safety equipment
 - One (1) hydraulic extension pruner
 - Three (3) chainsaws, in good condition, with extra parts, chains, etc., and tools to maintain said chainsaws in running condition. Saws shall be of sufficient size to be adequate for all tree pruning and removal operations. Rope, climbing saddle, pole saws, and related equipment to be used by equipment operator for tree removal operations.
 - Fuel and fluids for aerial lift, truck, saws and chipper.

7. The aerial lift must comply with American National Standards Institute (ANSI) Standard A92.2.
8. Bidders must submit documentation proving that the aerial lift to be used is either owned by the bidding company, or on a long-term lease.
9. Bidders must submit certification that the aerial lift to be used has passed electrical tests for 69KV and under devices, as per ANSI A92.2, Paragraph 5.2.2.1, within the preceding year.

C. EXPERIENCE

Bidders must submit documentation proving that the line clearance tree trimmer/tree climber has a minimum of five (5) years full-time experience operating aerial lift in electric line clearance, tree removal, and pruning operations, along public roads and near energized wires for a municipal or investor owned electric utility. The City reserves the right to request a new crew to be assigned to work within the City if needed by the Department of Public Works.

D. HOURS AND CONDITIONS OF WORK

1. Normal hours of work are from 7:00 a.m. until 3:00 p.m., Monday through Friday, excluding City of Groton recognized holidays. Lunch will be consumed at that discretion of the Supervisor within the eight hour work day.
2. Groton Utilities management reserves the right to change or suspend the scheduled work on any day due to adverse weather conditions, or for any other reason deemed necessary by Management. The Contractor will be given notice of cancellation by 7:00 am and there will be no cost to Groton Utilities or Bozrah Light and Power. For a partial work day, the Contractor will be paid for hours worked only, and at the rate of pay as stated on the bid form.

STORM-EMERGENCY WORK

1. Under storm or emergency conditions, as directed by the General Manager – Operations, up to four aerial lifts and crews will be available with a given four (4) hour notice. The General Manager – Operations will decide where each emergency crew will be assigned; either in Groton Utilities or Bozrah Light and Power Service territories. The Contractor must provide twenty four (24) hour telephone contact information.
2. Under storm or emergency conditions, the General Manager - Operations, will determine hours and days of work.
3. Groton Utilities reserves the right to call in additional tree service contractors if a given situation requires additional support.

4. The Contractor is to give absolute priority to Groton Utilities. In storm-emergency conditions, the Supervisor must receive permission from the General Manager – Operations to be released of Groton Utilities duties.
5. The awarded Contractor will be responsible for housing and food for tree crew personnel.

E. QUALITY OF WORKMANSHIP

1. GENERAL

Electric line clearing and tree pruning must comply with Municipal and State laws and regulations and shall follow the current and accepted arboricultural standards.

2. RESULTS TO BE ATTAINED

- a. The completed line-clearing job shall result in satisfactory operation of and adequate clearance for the overhead wires, cable, apparatus, or structures involved during normal storm conditions for not less than three (3) succeeding years with two (2) consecutive option years.
- b. Line clearing through a tree, in the area of the electrical facility only, shall be done in such a manner to leave the tree as well shaped as possible after the clearance to wires, cable apparatus, or structures has been accomplished. Directional pruning shall be performed whenever possible.
- c. Limbs or vines that may interfere with pole climbing shall be removed. A clear climbing space of at least 30 inches completely around the pole shall be provided.
- d. Other pruning and tree care shall be at the direction of the City’s or Town’s arborist or his representative.
- e. The Contractor will not cut down any tree in either Groton Utilities or Bozrah Light and Power service territories without Groton Utilities management permission..

3. CLEARANCE

Allowance for no less than five (5) growing seasons will be made for basic clearance guide. Many variable factors weigh on establishing proper tree clearances, and each tree presents an individual problem. The following clearances may be used as a basis for the exercise of good judgment.

4. TYPES OF CLEARANCE

To secure the clearance objectives outlined in Table I, line clearing shall be conducted in the following manner with respect to type of clearing. (See Attachment 1 Page 25-27.)

- a. **Line or circuits 34,500 Volts.** Trees, tree limbs, deadwood or unsound wood within 20 feet either side of wires and the full height of the tree shall be removed.
- b. **Primaries 13,800 – 8,320 Volts.** Effort shall be expended on trees, which are a hazard to these systems to sustain the clearance specified. Dead wood, which when broken from the trees will endanger wires, shall be removed. Dead or unsound wood over the public way shall be removed. Trees and tree limbs within 20 feet of the power lines and the full height of the tree shall be removed.
- c. **600-Volt Class Wires and Armored Aerial Cables.** All dead wood, which is hazardous because of its weight, shall be removed. When adequate clearance to aerial cable cannot be obtained, the tree must be referred to the corresponding town’s City Arborist / Tree Warden for further action. Trees and tree limbs within 20 feet of the power lines and the full height of the tree shall be removed

5. **CUTS**

Cutting shall be done in such a manner to protect current tree health considering all possible regard for future growth and development. The following shall receive particular attention:

- a. In pruning, no damage shall be done to the cambium layer and loosening or stripping of the bark shall be avoided.
- b. Cuts shall be made according to current standards endorsed by the National Arborist Association.
- c. Climbing irons shall not be used in any tree unless the removal of the tree is certain. Cutting down trees must be approved by Groton Utilities Management prior to the tree removal.

6. **DISPOSAL OF BRUSH**

Brush, twigs and snips shall be promptly and completely cleared from streets and private property. It shall be chipped and transported to an accepted disposal area in Groton Utilities and Bozrah Light and Power service territories, and not be allowed to accumulate on highways, become an obstruction to traffic, or be objectionable to the public. There will be no disposal charge to the Contractor for wood chips resulting from this contract.

2. **INSURANCE**

A. **REQUIREMENTS**

The Provider shall provide a certificate of insurance in the minimum amounts as specified herein. City of Groton is to be listed as additional insured on Commercial General Liability and Excess/Umbrella Liability coverage.

Workers Compensation - limits as required per State of Connecticut statute, with employer liability limits of \$500,000/500,000/500,000.

Commercial General Liability

- \$1,000,000 per occurrence
- \$2,000,000 general aggregate
- \$1,000,000 personal/advertising injury
- \$2,000,000 products/completed operations aggregate

Commercial Automobile

\$1,000,000 combined single accident for owned, non-owned, and hired autos

Excess/Umbrella Liability (over commercial general liability and automobile liability coverage)

- \$1,000,000 per occurrence
- \$2,000,000 general aggregate

B. OTHER INSURANCE PROVISION:

The policies are to contain, or be endorsed to contain, the following provisions:

Workers' Compensation and Employers' Liability Coverage:

1. The insurer shall agree to waive all rights of subrogation against the City of Groton for losses arising from the work performed by the contractor for the City.
2. If State statute does not require the contractor to obtain Worker's Compensation insurance, than the contractor shall furnish the City with adequate proof of the self-employment status. The contractor shall agree to waive all rights of claims against the City for losses arising from the work performed by the contractor for the City. In the event that during the contract period this self-employment status should change, the contractor shall immediately furnish proper notice to the City and a certificate of insurance indicating that Worker's Compensation insurance and Employer's Liability Coverage has been obtained by the contractor.

C. ACCEPTABILITY OF INSURANCE:

1. Insurance is to be placed with insurers with an A.M. Best's rating of no less than A-/VIII.
2. Insurance companies must be licensed to do business in the State of Connecticut.

3. ADDITIONAL SAFETY

The Contractor is to provide proper and sufficient safeguard and protection from any accidents, injuries, or damages. The Contractor is responsible for any loss or damage that may happen to the work or to any part thereof, or to any person, persons or property whatsoever, or to any of the tools or materials used and employed in the finishing and completion of work. The City of Groton or Groton Utilities / Bozrah Light and Power will not hold any responsibility for such

occurrences. It is the objective of the City of Groton and Groton Utilities / Bozrah Light and Power that all work be performed safely. Mandatory safety practices shall include (but are not limited to) the following:

- A. Upper booms and personal baskets of aerial lifts must be fully insulated at all times.
- B. Electrically approved hard-hats must be worn in the work areas at all times.
- C. Safety equipment including warning signs, traffic cones, flashing lights, etc., shall be used to protect the work area.
- D. Bucket truck outriggers must be down whenever the bucket is in operation.
- E. Eye protection, i.e. safety spectacles, goggles or face shields shall be worn at all times in the work area.
- F. Wheel chocks must be used when truck is parked in work areas.
- G. If the bucket is to be operated, chocks shall be properly placed to the front and rear of the rear wheels at all times. Under no condition shall outriggers be considered as a substitute for wheel chocks.
- H. Safety belts must be attached to the bucket or upper boom and must be worn when the bucket is being operated. GU's representative shall order the work stopped for any violations of safety requirements in the work area. Until such violation is corrected, GU will not be billed for time lost due to safety violations.
- I. All work methods and employee protection shall comply with the current O.S.H.A. standards.
- J. The Contractor agrees to comply with all applicable Federal, State and Local laws and regulations. In addition, the Contractor agrees to Groton Utilities safety procedures and standards.
- K. The Contractor must provide a monthly safety meeting with tree crew personnel. Proof of the monthly Safety Meeting will be documented and provided to Groton Utilities/Bozrah Light and Power Management by electronic form (e-mails).
- L. The Contractor must ensure that all tree crew personnel have a tailboard discussion on a daily bases prior to the start of work. Tailboard discussions must include all potential safety hazards for the day's work. Electric contact hazards, traffic hazards, weather, chipper hazards, chain saws, personnel protection, equipment; and environmental hazards such a bees, birds, poison ivy are topics that will be addressed each day.
- M. The Contractor must provide a qualified Ground-man for traffic duty for each tree trimming crew. The traffic duty Ground-man must be fully trained and have a complete

knowledge of State of Connecticut Department of Transportation (DOT) and Groton Utilities traffic laws and regulations concerning protection of the work site. Responsibilities of the traffic duty Ground-man include but are not limited to:

- a. Installing traffic cones and warning signs per State of CT DOT and Groton Utilities traffic safety and procedures
- b. Performing flagger duties and directing of traffic as required
- c. Workers must wear highly visible clothing and proper protection equipment (PPE) including hard hats and safety glasses; flash lights shall be used at night

PROCEDURES AND LEGAL

1. PERMITS

- A. The Contractor and operators must be fully licensed by the appropriate State and Federal agencies and must submit a copy of such license upon request by GU or proof thereof.
- B. The Contractor shall ensure that all vehicle operators currently hold valid hoisting, Commercial Drivers License (CDL), or other applicable licenses as required by the State of Connecticut Registry of Motor Vehicles.

2. MINIMUM WAGE RATES

Minimum Wage Rates to be used for this contract are according to the latest rates published by the State of Connecticut Division of Labor and Industries.

3. BID PRICE SUMMARY

The bidder shall fill in the appropriate information on the Bid Price Summary and an authorized representative must sign said Summary.

4. BIDS WILL BE EVALUATED PER THE FOLLOWING

- Contractor safety program: 30%
- Economic - Costs: 30 %
- Trimming History: 20%
- Other: 10%
- References: 10%
- Accidents and Safety Violations, including OSHA violations from the past 5 years: 10%

CERTIFICATE OF NON-COLLUSION

By submission of this bid or proposal, the bidder certifies that; (a) this bid or proposal has been independently arrived at without collusion with any other bidder or with any competitor or potential competitor; (b) this bid or proposal has not been knowingly disclosed and will not be knowingly disclosed prior to the opening of the bids or proposals for this specification, to any other bidder, competitor or potential competitor; (c) no attempt has been or will be made to induce any other person, business, partnership, corporation, union, committee, club or organization, unity, or group of individuals to submit a bid or proposal; (d) the person signing this bid or proposal certifies that he has fully informed himself regarding the accuracy of the statements contained in this certification, under the penalties of perjury, affirms the truth thereof, such penalties being applicable to the bidder as well as to the persons signing in its behalf.

Name of person or persons signing bid or proposal

Title

Name of business

BID FORM

This bid is submitted to Groton Utilities, for "Tree Trimming Services". All prices shall remain firm for the period of this contract starting from the date of award.

YEAR #1

1. TREE TRIMMING – Crew assigned to work in Groton Utilities and Bozrah Light and Power Service Territories

Tree trimming crew consists of a one (1) Working Foreman, one (1) Ground-man, one (1) Ground-man for traffic duty and one (1) Aerial Bucket truck with a minimum height of 55 feet with equipment as stated in Section 1 (B) of this bid package.

	Hourly Cost Normal 40-hr Work Week	Overtime Cost Per Hour	Holiday or Other Hourly Rate
Supervisor With pickup truck	_____	_____	_____
Groton Tree Crew #1	_____	_____	_____
Groton Tree Crew #2	_____	_____	_____
Bozrah Tree Crew #3	_____	_____	_____
Bozrah Tree Crew #4	_____	_____	_____

2. Specify times and rates for normal and overtime hours of work.

Normal hours of work: _____

Overtime hours of work: _____

Hours when Holiday or Other charge applies _____

Notification requirements for Cancellation so no charges apply

YEAR #2

1. TREE TRIMMING – Crew assigned to work in Groton Utilities and Bozrah Light and PowerService Territories

Tree trimming crew consists of a one (1) Working Foreman, one (1) Ground-man, one (1) Ground-man for traffic duty and one (1) Aerial Bucket truck with a minimum height of 55 feet with equipment as stated in Section 1 (B) of this bid package.

	Hourly Cost Normal 40-hr Work Week	Overtime Cost Per Hour	Holiday or Other Hourly Rate
Supervisor With pickup truck	_____	_____	_____
Groton Tree Crew #1	_____	_____	_____
Groton Tree Crew #2	_____	_____	_____
Bozrah Tree Crew #3	_____	_____	_____
Bozrah Tree Crew #4	_____	_____	_____

2. Specify times and rates for normal and overtime hours of work.

Normal hours of work: _____

Overtime hours of work: _____

Hours when Holiday or Other charge applies _____

Notification requirements for Cancellation so no charges apply

YEAR #3

2. TREE TRIMMING – Crew assigned to work in Groton Utilities and Bozrah Light and Power Service Territories

Tree trimming crew consists of a one (1) Working Foreman, one (1) Ground-man, one (1) Ground-man for traffic duty and one (1) Aerial Bucket truck with a minimum height of 55 feet with equipment as stated in Section 1 (B) of this bid package.

	Hourly Cost Normal 40-hr Work Week	Overtime Cost Per Hour	Holiday or Other Hourly Rate
Supervisor With Pickup Truck	_____	_____	_____
Groton Tree Crew #1	_____	_____	_____
Groton Tree Crew #2	_____	_____	_____
Bozrah Tree Crew #3	_____	_____	_____
Bozrah Tree Crew #4	_____	_____	_____

2. Specify times and rates for normal and overtime hours of work.

Normal hours of work: _____

Overtime hours of work: _____

Hours when Holiday or Other charge applies _____

Notification requirements for Cancellation so no charges apply

Option - YEAR #4

3. TREE TRIMMING – Crew assigned to work in Groton Utilities and Bozrah Light and Power Service Territories

Tree trimming crew consists of a one (1) Working Foreman, one (1) Ground-man, one (1) Ground-man for traffic duty and one (1) Aerial Bucket truck with a minimum height of 55 feet with equipment as stated in Section 1 (B) of this bid package.

	Hourly Cost Normal 40-hr Work Week	Overtime Cost Per Hour	Holiday or Other Hourly Rate
Supervisor With Pickup Truck	_____	_____	_____
Groton Tree Crew #1	_____	_____	_____
Groton Tree Crew #2	_____	_____	_____
Bozrah Tree Crew #3	_____	_____	_____
Bozrah Ttee Crew #4	_____	_____	_____

2. Specify times and rates for normal and overtime hours of work.

Normal hours of work: _____

Overtime hours of work: _____

Hours when Holiday or Other charge applies _____

Notification requirements for Cancellation so no charges apply

Option - YEAR #5

4. TREE TRIMMING – Crew assigned to work in Groton Utilities and Bozrah Light and PowerService Territories

Tree trimming crew consists of a one (1) Working Foreman, one (1) Ground-man, one (1) Ground-man for traffic duty and one (1) Aerial Bucket truck with a minimum height of 55 feet with equipment as stated in Section 1 (B) of this bid package.

	Hourly Cost Normal 40-hr Work Week	Overtime Cost Per Hour	Holiday or Other Hourly Rate
Supervisor With Pickup Truck	_____	_____	_____
Groton Tree Crew #1	_____	_____	_____
Groton Tree Crew #2	_____	_____	_____
Bozrah Tree Crew #3	_____	_____	_____
Bozrah Tree Crew #4	_____	_____	_____

2. Specify times and rates for normal and overtime hours of work.

Normal hours of work: _____

Overtime hours of work: _____

Hours when Holiday or Other charge applies _____

Notification requirements for Cancellation so no charges apply

YEAR #1

Optional - TREE TRIMMING – Other Equipment, Services and Labor when needed:
 Please provide hourly rates for equipment, for labor please provide standard rates, overtime rates and holiday rates

	Standard Rate per HR	Overtime Rate per HR	Holiday or Other Hourly Rate per HR
Supervisor	_____	_____	_____
Working Foreman	_____	_____	_____
Journeyman	_____	_____	_____
Ground-man	_____	_____	_____
Climbing Crew	_____	_____	_____
Includes three (3) climbing personnel and a 4X4 crew cab pickup			
Flagger	_____	_____	_____
Aerial Bucket 55 ft.	_____	_____	_____
Aerial Bucket 60 ft.	_____	_____	_____
Aerial Bucket 70 ft.	_____	_____	_____
Chipper	_____	_____	_____
Chipper Truck	_____	_____	_____
4X4 Pickup	_____	_____	_____
Chain Saw 30-36	_____	_____	_____
Brush Saw	_____	_____	_____
Stump Grinder	_____	_____	_____
Log Loader	_____	_____	_____
70 Foot Skidder	_____	_____	_____
Flagger	_____	_____	_____
Chain Saw 30-36	_____	_____	_____

YEAR #2

Optional - TREE TRIMMING – Other Equipment, Services and Labor when needed:
 Please provide hourly rates for equipment, for labor please provide standard rates, overtime rates and holiday rates

	Standard Rate per HR	Overtime Rate per HR	Holiday or Other Hourly Rate per HR
Supervisor	_____	_____	_____
Working Foreman	_____	_____	_____
Journeyman	_____	_____	_____
Ground-man	_____	_____	_____
Climbing Crew	_____	_____	_____
Includes three (3) climbing personnel and a 4X4 crew cab pickup			
Flagger	_____	_____	_____
Aerial Bucket 55 ft.	_____	_____	_____
Aerial Bucket 60 ft.	_____	_____	_____
Aerial Bucket 70 ft.	_____	_____	_____
Chipper	_____	_____	_____
Chipper Truck	_____	_____	_____
4X4 Pickup	_____	_____	_____
Chain Saw 30-36	_____	_____	_____
Brush Saw	_____	_____	_____
Stump Grinder	_____	_____	_____
Log Loader	_____	_____	_____
70 Foot Skidder	_____	_____	_____
Flagger	_____	_____	_____
Chain Saw 30-36	_____	_____	_____

YEAR #3

Optional - TREE TRIMMING – Other Equipment, Services and Labor when needed:
 Please provide hourly rates for equipment, for labor please provide standard rates, overtime rates and holiday rates

	Standard Rate per HR	Overtime Rate per HR	Holiday or Other Hourly Rate per HR
Supervisor	_____	_____	_____
Working Foreman	_____	_____	_____
Journeyman	_____	_____	_____
Ground-man	_____	_____	_____
Climbing Crew	_____	_____	_____
Includes three (3) climbing personnel and a 4X4 crew cab pickup			
Flagger	_____	_____	_____
Aerial Bucket 55 ft.	_____	_____	_____
Aerial Bucket 60 ft.	_____	_____	_____
Aerial Bucket 70 ft.	_____	_____	_____
Chipper	_____	_____	_____
Chipper Truck	_____	_____	_____
4X4 Pickup	_____	_____	_____
Chain Saw 30-36	_____	_____	_____
Brush Saw	_____	_____	_____
Stump Grinder	_____	_____	_____
Log Loader	_____	_____	_____
70 Foot Skidder	_____	_____	_____
Flagger	_____	_____	_____
Chain Saw 30-36	_____	_____	_____

OPTION - YEAR #4

Optional - TREE TRIMMING – Other Equipment, Services and Labor when needed:
 Please provide hourly rates for equipment, for labor please provide standard rates, overtime rates and holiday rates

	Standard Rate per HR	Overtime Rate per HR	Holiday or Other Hourly Rate per HR
Supervisor	_____	_____	_____
Working Foreman	_____	_____	_____
Journeyman	_____	_____	_____
Ground-man	_____	_____	_____
Climbing Crew	_____	_____	_____
Includes three (3) climbing personnel and a 4X4 crew cab pickup			
Flagger	_____	_____	_____
Aerial Bucket 55 ft.	_____	_____	_____
Aerial Bucket 60 ft.	_____	_____	_____
Aerial Bucket 70 ft.	_____	_____	_____
Chipper	_____	_____	_____
Chipper Truck	_____	_____	_____
4X4 Pickup	_____	_____	_____
Chain Saw 30-36	_____	_____	_____
Brush Saw	_____	_____	_____
Stump Grinder	_____	_____	_____
Log Loader	_____	_____	_____
70 Foot Skidder	_____	_____	_____
Flagger	_____	_____	_____
Chain Saw 30-36	_____	_____	_____

OPTION - YEAR #5

Optional - TREE TRIMMING – Other Equipment, Services and Labor when needed:
 Please provide hourly rates for equipment, for labor please provide standard rates, overtime rates and holiday rates

	Standard Rate per HR	Overtime Rate per HR	Holiday or Other Hourly Rate per HR
Supervisor	_____	_____	_____
Working Foreman	_____	_____	_____
Journeyman	_____	_____	_____
Ground-man	_____	_____	_____
Climbing Crew	_____	_____	_____
Includes three (3) climbing personnel and a 4X4 crew cab pickup			
Flagger	_____	_____	_____
Aerial Bucket 55 ft.	_____	_____	_____
Aerial Bucket 60 ft.	_____	_____	_____
Aerial Bucket 70 ft.	_____	_____	_____
Chipper	_____	_____	_____
Chipper Truck	_____	_____	_____
4X4 Pickup	_____	_____	_____
Chain Saw 30-36	_____	_____	_____
Brush Saw	_____	_____	_____
Stump Grinder	_____	_____	_____
Log Loader	_____	_____	_____
70 Foot Skidder	_____	_____	_____
Flagger	_____	_____	_____
Chain Saw 30-36	_____	_____	_____

BID SUBMISSION

(Please enter amounts for each year. If escalation in price, please explain.)

YEAR	GROTON UTILITIES	BOZRAH LIGHT & POWER
2022		
2023		
2024		
2025 (Option)		
2026 (Option)		

REFERENCES - Please provide at least two current references.

Company Name _____

Company Address _____

Company Contact _____

Telephone _____

Company Name _____

Company Address _____

Company Contact _____

Telephone _____

Company Name _____

Company Address _____

Company Contact _____

Telephone _____

This bid is submitted in complete accordance with the City of Groton, Groton Utilities specification for "TREE TRIMMING".

Date _____

Name _____

Address _____

Telephone (_____) _____

Tax Id. # _____

Incorporated in state of _____

Contact Person _____

Authorized Signature _____

Title _____

Date _____

Attachment 1

FIGURE 1

**TYPE OF TRIMMING AND TREE-TO-CONDUCTOR CLEARANCE
 FOR PRIMARY DISTRIBUTION LINES (2.4 TO 34.5kv)**

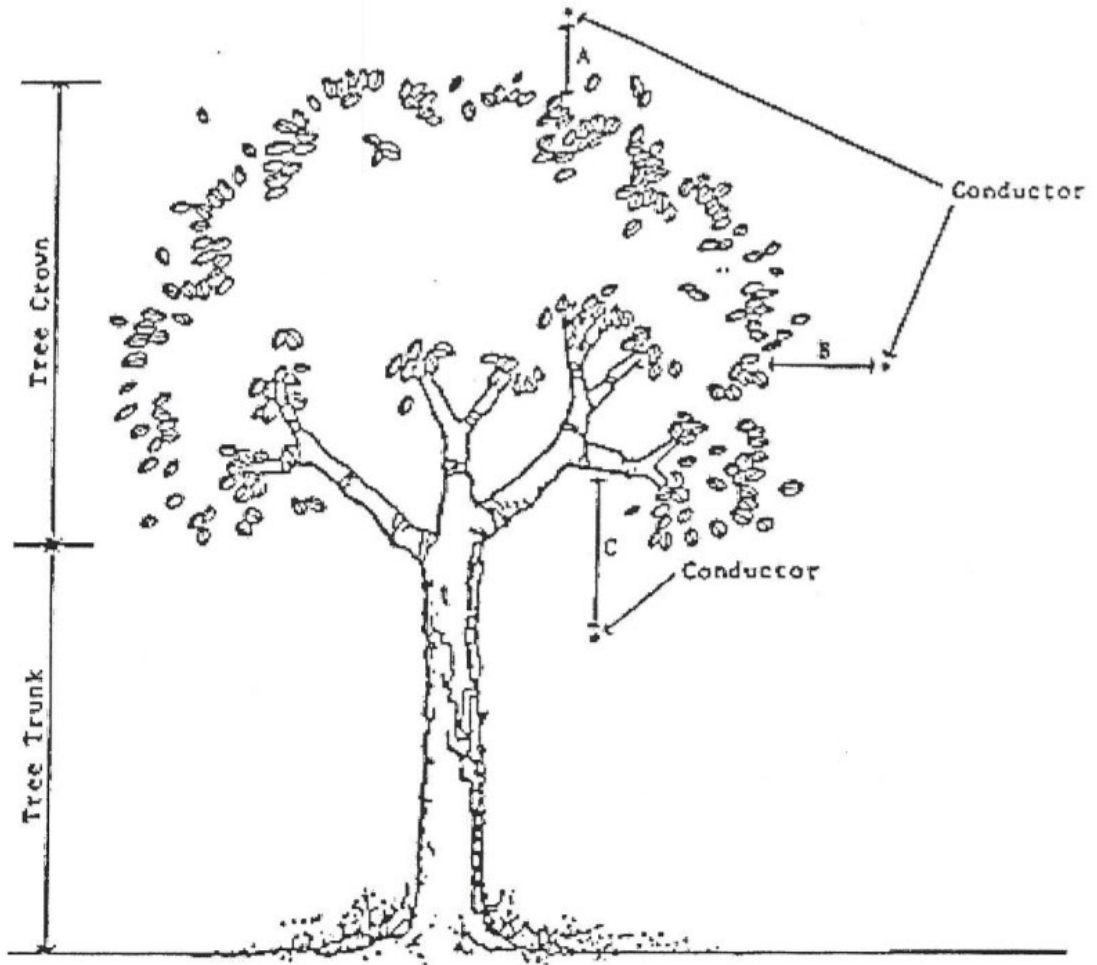


TABLE 1

CLEARANCE	TYPE OF TRIMMING	CLEARANCE
A	Under Trimming	10 feet
B	Side Trimming	8 feet
C	Overhead Trimming (remove overhang where possible)	15 feet
Total	Removal of Tree Where Allowable by Tree Warden following Town Permissioning Policies	Total Removal of Tree with stump grinding as necessary

EXAMPLE 1:

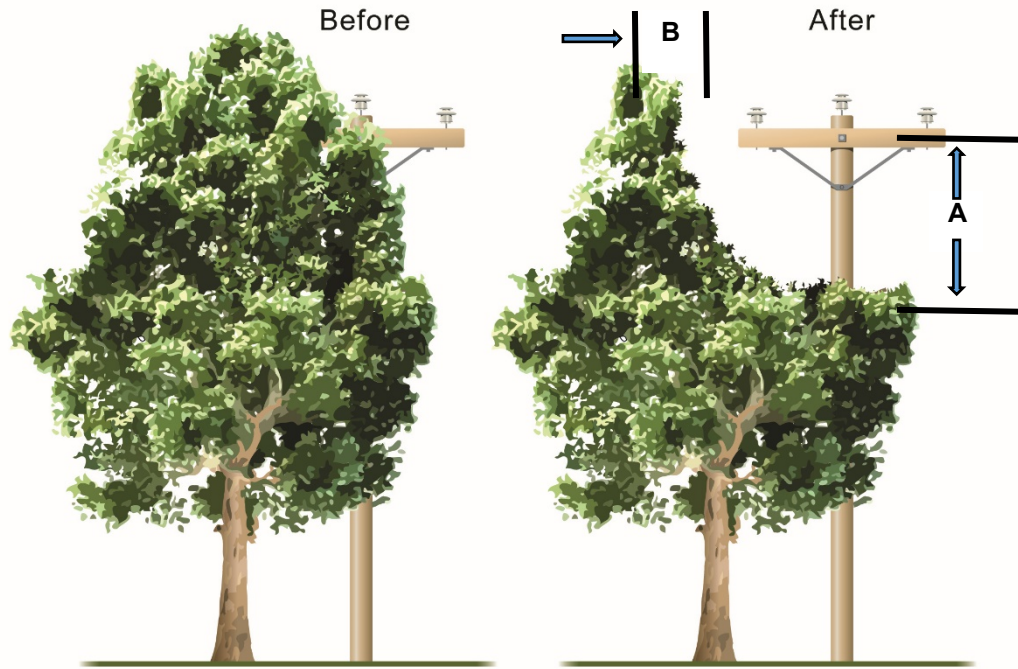


FIGURE 2

**CLEARANCE ZONE DIMENSIONS
FOR PRIMARY DISTRIBUTION LINES (2.4 TO 34.5kV)**

