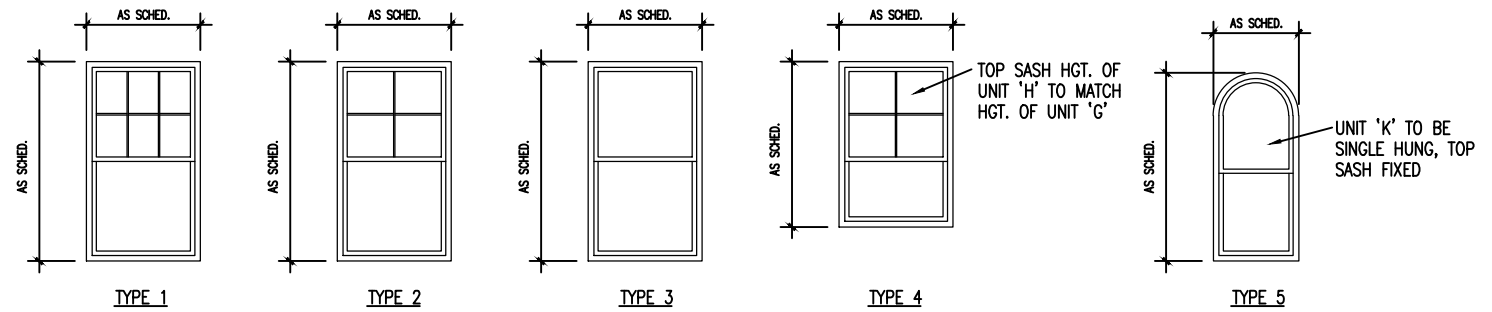


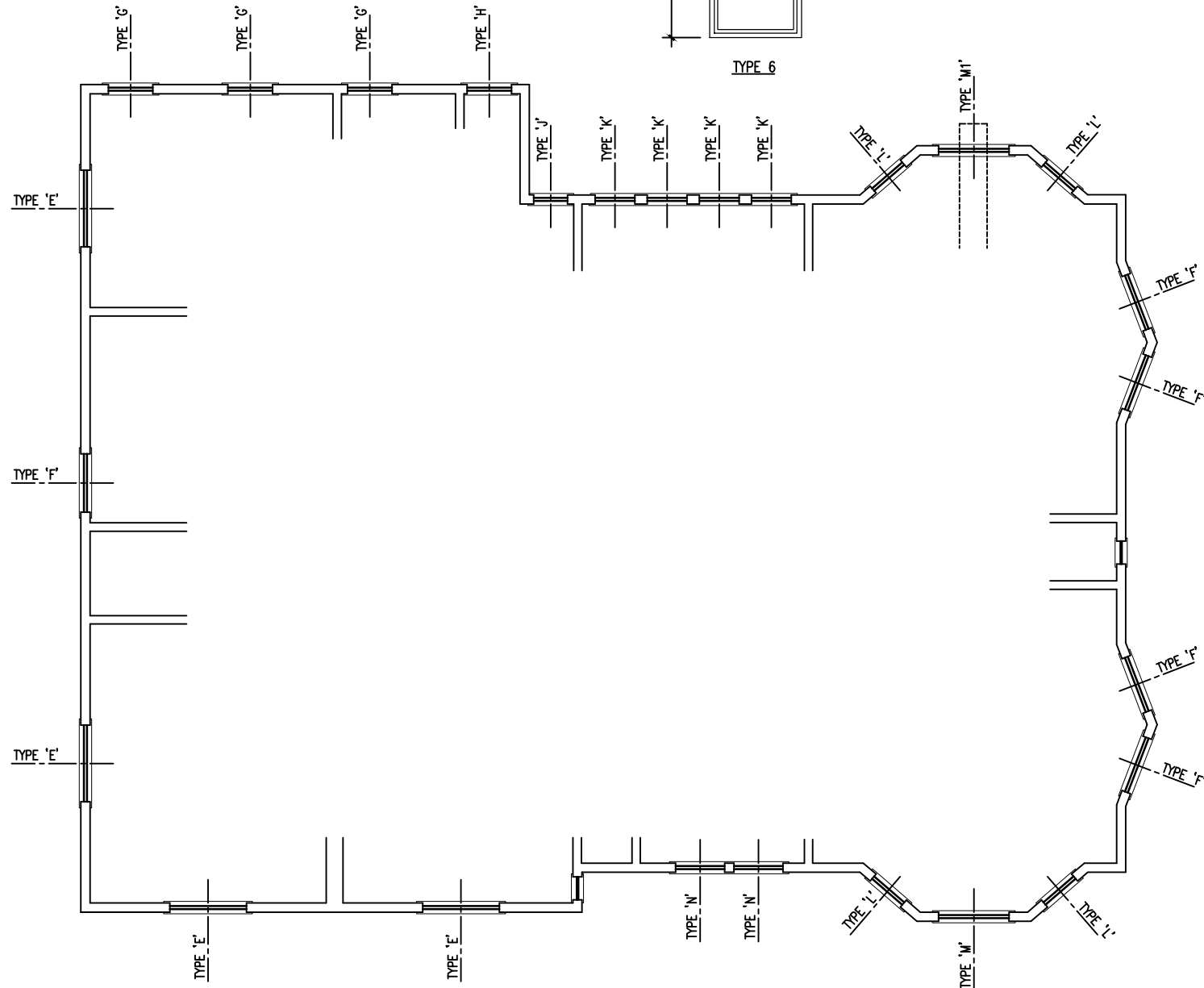
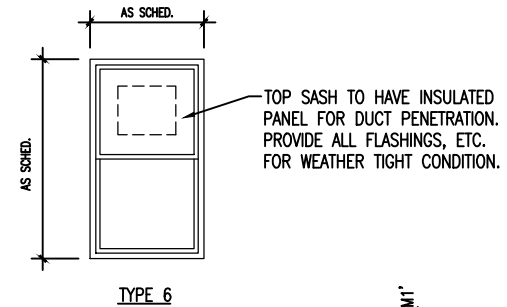
WINDOW SCHEDULE			
LABEL	SIZE	TYPE	NOTES
A	3'-0" x 5'-6"	1	DOUBLE HUNG UNIT
B	3'-4" x 5'-6"	1	DOUBLE HUNG UNIT
C	4'-2" x 5'-6"	1	DOUBLE HUNG UNIT
D	2'-6" x 5'-6"	1	DOUBLE HUNG UNIT
E	4'-2" x 5'-2"	1	DOUBLE HUNG UNIT
F	3'-2" x 5'-2"	2	DOUBLE HUNG UNIT
G	2'-6" x 5'-2"	2	DOUBLE HUNG UNIT
H	2'-6" x 4'-2"	4	DOUBLE HUNG UNIT
J	1'-10" x 5'-2"	3	DOUBLE HUNG UNIT
K	2'-2" x 5'-2"	5	SINGLE HUNG UNIT W/ FIXED ARCHED TOP SASH
L	2'-2" x 5'-2"	2	DOUBLE HUNG UNIT
M	3'-10" x 5'-2"	1	DOUBLE HUNG UNIT
M1	3'-10" x 5'-2"	6	DOUBLE HUNG UNIT - FIXED SASH
N	2'-8" x 4'-2"	3	DOUBLE HUNG UNIT

NOTES:

- ALL NEW WINDOW UNITS TO MATCH EXISTING WINDOWS AT THE SITE. G.C. TO FIELD VERIFY ALL SIZES BEFORE ORDERING NEW. VERIFY ALL ROUGH OPENINGS, TRIM CONDITIONS, ETC.
- REMOVE EXISTING ORIGINAL INTERIOR WOOD TRIM. CONTRACTOR TO USE EXTREME CARE TO REMOVE, STORE AND RE-INSTALL ALL INTERIOR TRIM TO IS ORIGINAL LOCATIONS. MODIFY ALL TRIM AS REQUIRED TO FIT SIZE OF NEW WINDOW UNITS.
- EXTERIOR TRIM TO BE REMOVED AND REPLACED W/ 1"x_ PINE TO MATCH EXISTING SIZE, PROFILES ETC. ON SITE - CONTRACTOR TO VERIFY IN FIELD. ALL NEW WOOD TO BE PRIMED, ALL SIDES AND EDGES, AND PAINTED TWO COATS - COLOR TO MATCH EXISTING.
- PROVIDE NEW 2"x_ FRAMING IN EXISTING OPENINGS AS REQ'D TO ACCOMMODATE NEW WINDOW UNITS. INSULATE EXISTING SASH WEIGHT POCKETS AT JAMBS AS REQ'D.
- BASIS OF DESIGN TO BE 'ANDERSEN' WINDOWS, 400 SERIES, CLAD EXTERIOR, WOOD INTERIOR. HIGH PERFORMANCE LOW-E4 IMPACT RESISTANT GLASS, DIVIDED LIGHT WITH SPACER, INSECT SCREENS. EXTERIOR COLOR TO BE 'WHITE'. INTERIOR - FIRST FLOOR UNITS TO BE PRIMED AND PAINTED, COLOR TO MATCH EXISTING. SECOND FLOOR UNITS TO BE STAINED AND SEALED, COLOR TO MATCH EXISTING AT SITE.



WINDOW TYPES



SECOND FLOOR - WINDOW LAYOUT
SCALE: 1/8" = 1'-0"



ARCHITECTURE
ENGINEERING
ENVIRONMENTAL
LAND SURVEYING

355 Research Parkway
Meriden, CT 06450
(203) 630-1400
(203) 630-2615 Fax



RENOVATIONS TO
TYLER BEACH HOUSE
EASTERN POINT ROAD
GROTON, CT 06340

DESIGNED	A.J.C.
DRAWN	A.J.C.
REVIEWED	D.L.C.
SCALE	AS NOTED
PROJECT NO.	1703392
DATE	8/25/2017
CAD FILE	A1703392-A1.03

TITLE
SECOND FLOOR
PLAN

SHEET NO.
A1.03